

GENSET MODEL PCG200

| POWERPAC | CUMMINS | 380-415 50hz | | 480v 60hz | |
|----------------------|--------------|--------------|-----|-----------|-----|
| Generating Set Model | Engine Model | KVA | KW | KVA | KW |
| PCG200 (Prime) | QSB7G5 | 200 | 160 | 225 | 180 |
| PCG200 (Standby) | QSB7G5 | 220 | 176 | 250 | 200 |

ALTERNATOR MODELS

| Newage Stamford | Mecc Alte | Leroy Somer |
|-----------------|-----------|-------------|
| UCI274H | ECO38-2SN | LSA46.2 M5 |

CONTROL PANEL

| DEEPSEA | SMARTGEN |
|---------|----------|
| DSE4520 | HGM420N |

RATINGS:

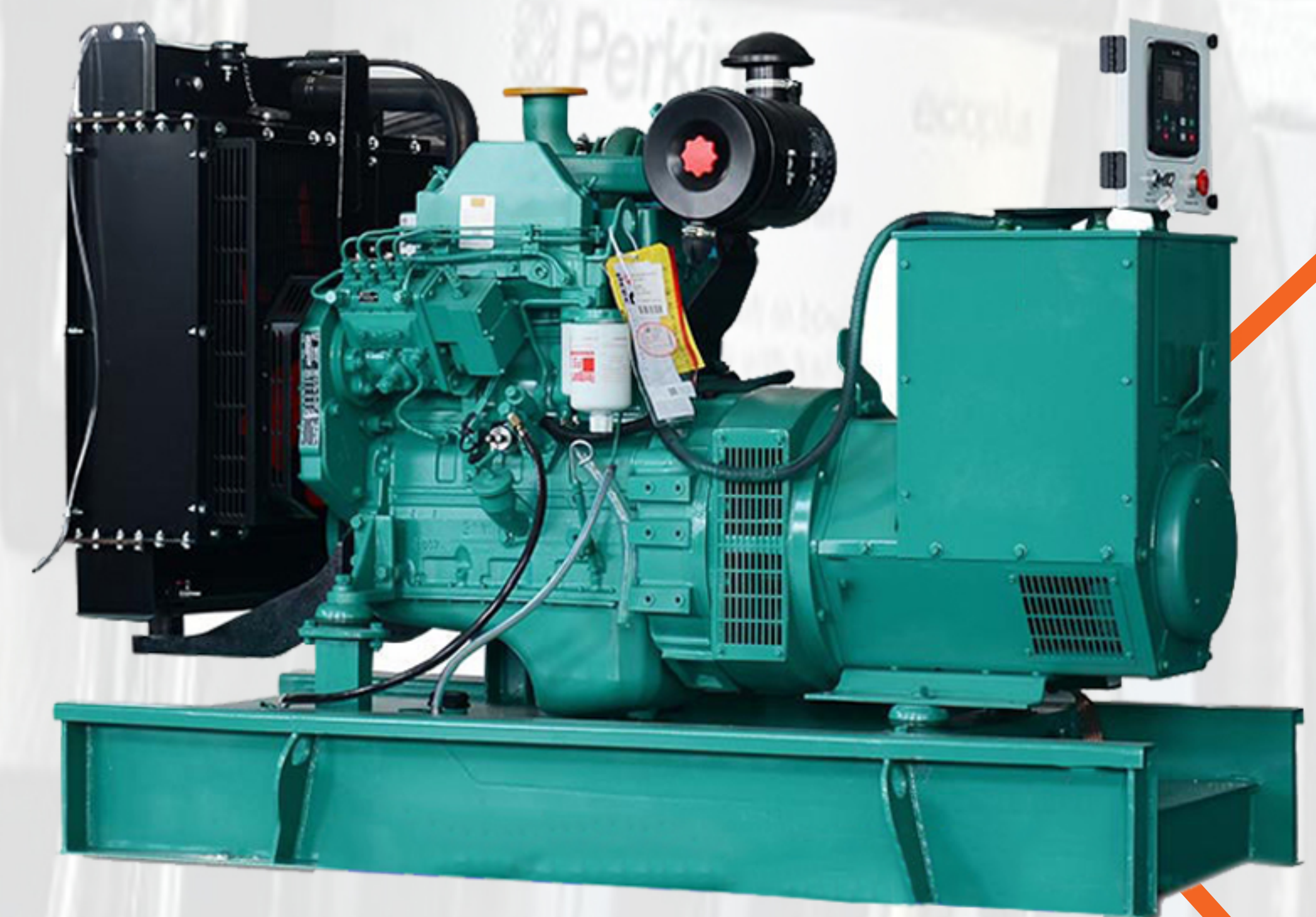
- Prime Output:**
 This rating is applicable for supplying continuous electrical power at variable load. There is no limitation to the annual hours of operation and this model can supply 10% overload power for one hour in 12 hours.
- Standby Output:**
 This rating is applicable for supplying electrical power (at variables load) in the event of a utility power failure. No overload is permitted on these ratings.
- Standard References Conditions:**
 25°C, 100ml A.S.L, 30% relative humidity.

Design Features:

- High Quality assembly, providing stiffness and low vibration.
- Powder coated steel, Corrosion and scratch resistant.
- Compact and long service life.
- Wiring and connectors with double protection.
- Protection guards in radiator and high voltage parts.
- Full 12 month Warranty.

Design Standards:

- CE marking
- ISO8528-1995
- GB/T2820-1997
- ISO 9001:2008 Registered Company



CONFIGURATION:

- 4-Stroke water-cooled diesel engine
- Industrial silencer
- Coolant recovery tank
- Single bearing, 4 pole brushless alternator
- Anti vibration mounting
- Integral fuel tank with fully bounded base protection
- Fuel level sensor
- Control Panel - DEEPSEA/SMARTGEN
- Auto start control system with electronic digital control module DSE6020 as standard
- Output circuit breaker
- Emergency stop button
- High engine temprature and low oil pressure shutdown system
- 12V starter battery with leads and switch

TROLLY:

- 4 Wheel Trolley Mounted
- Steerable
- Towable
- Having Brake

AUCOUSTIC CANAOPY FEATURES:

- Water and dust proof design
- Door locks
- High quality sound absorbing and fire retardant inner material
- Lifting lugs
- Forklift holes in base